

**A4**  
**PIANO TERRA**  
**PIANO PRIMO**

Scala 1:100  
Rev03 - 02.03.2022

**A4 - TOT. 93.60 mq**  
**(esclusi giardino, terrazzo e garage)**  
**Superfici utili calpestabili:**

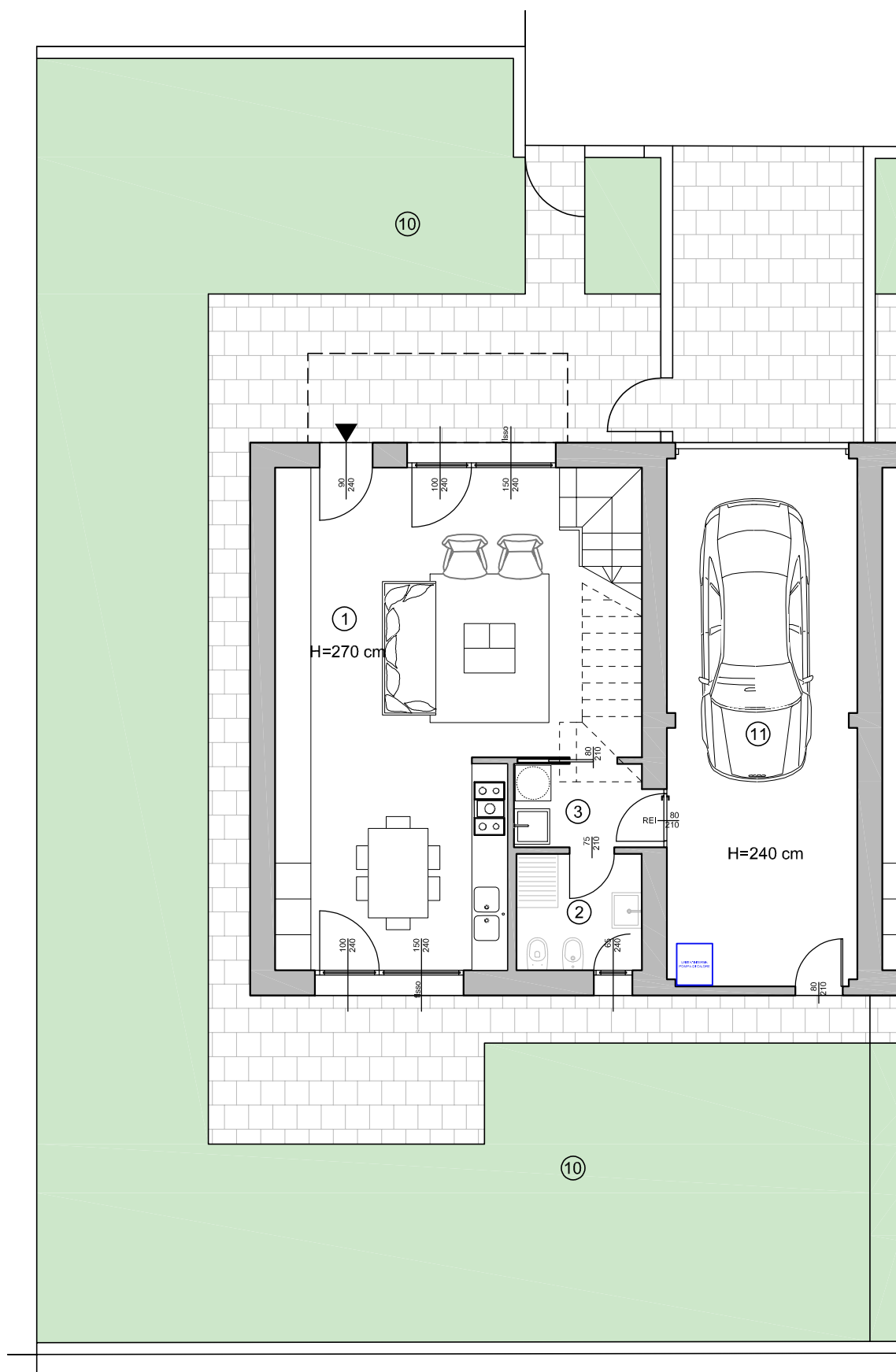
1 - Cucina - Soggiorno	41.80 mq
2 - Bagno	4.15 mq
3 - Disimpegno	3.00 mq
4 - Camera padronale	14.00 mq
5 - Camera	13.20 mq
6 - Camera	9.05 mq
7 - Bagno	5.55 mq
8 - Disimpegno	2.85 mq
9 - Terrazzo	5.15 mq
10 - Giardino	190.00 mq
11 - Garage	28.75 mq

per info e vendite  
**HOUSE LIFE** SERVIZI IMMOBILIARI COMPLETI  
info2@houselife.it  
0444 602382

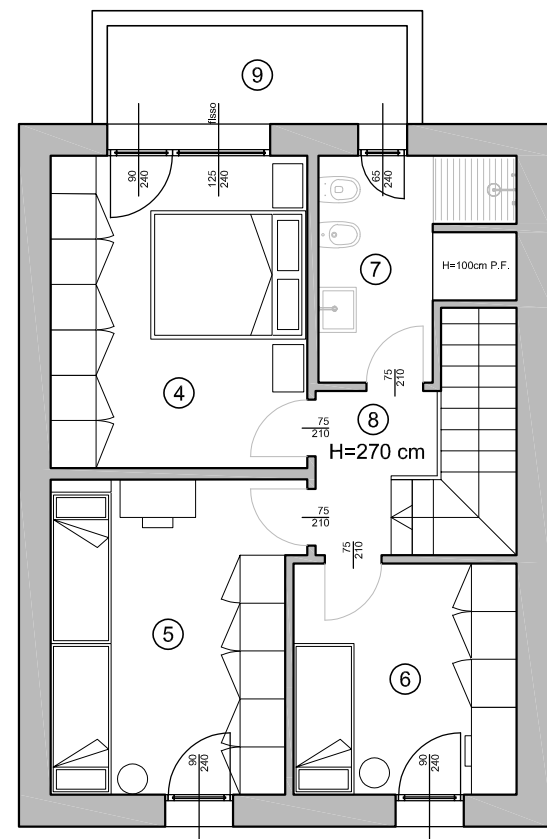
un'iniziativa di  
**SAMA SRL**

concept architettonico  
**ASA** studio albanese

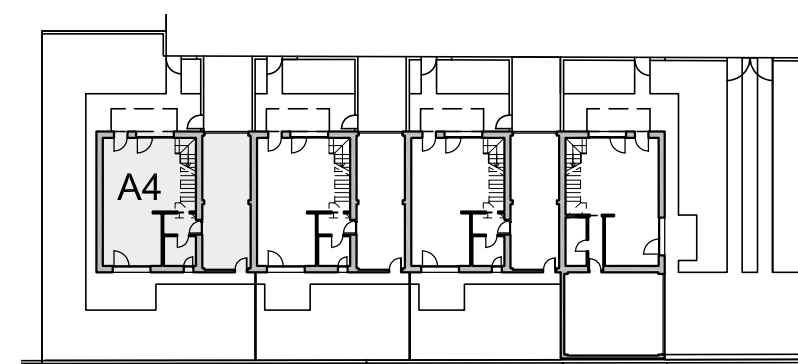
impresa costruttrice



PIANO TERRA



PIANO PRIMO



Planimetria generale - scala 1:500