

A1
PIANO TERRA
PIANO PRIMO

Scala 1:100
Rev03 - 02.03.2022

per info e vendite



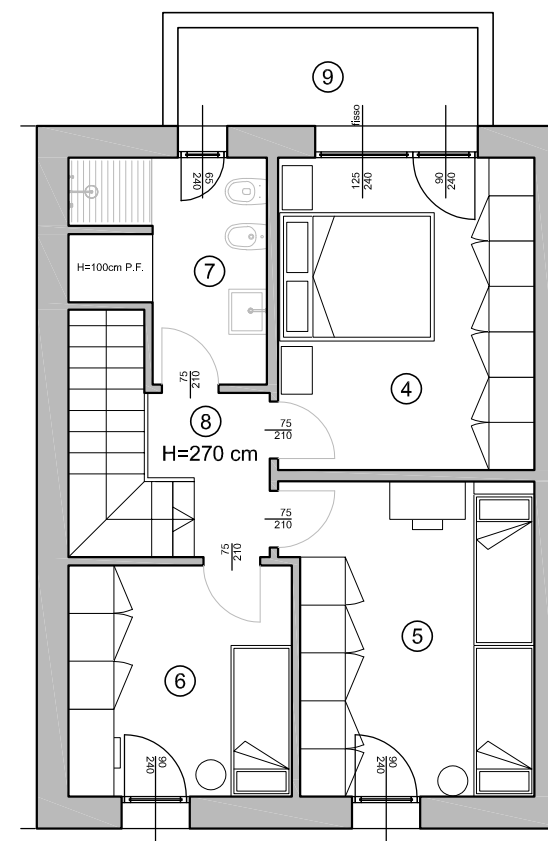
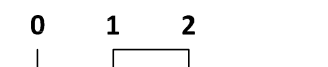
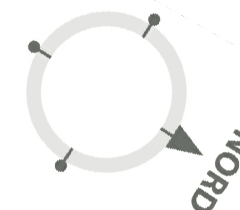
info2@houselife.it
0444 602382

un'iniziativa di
SAMA SRL

concept architettonico

ASA studio albanese

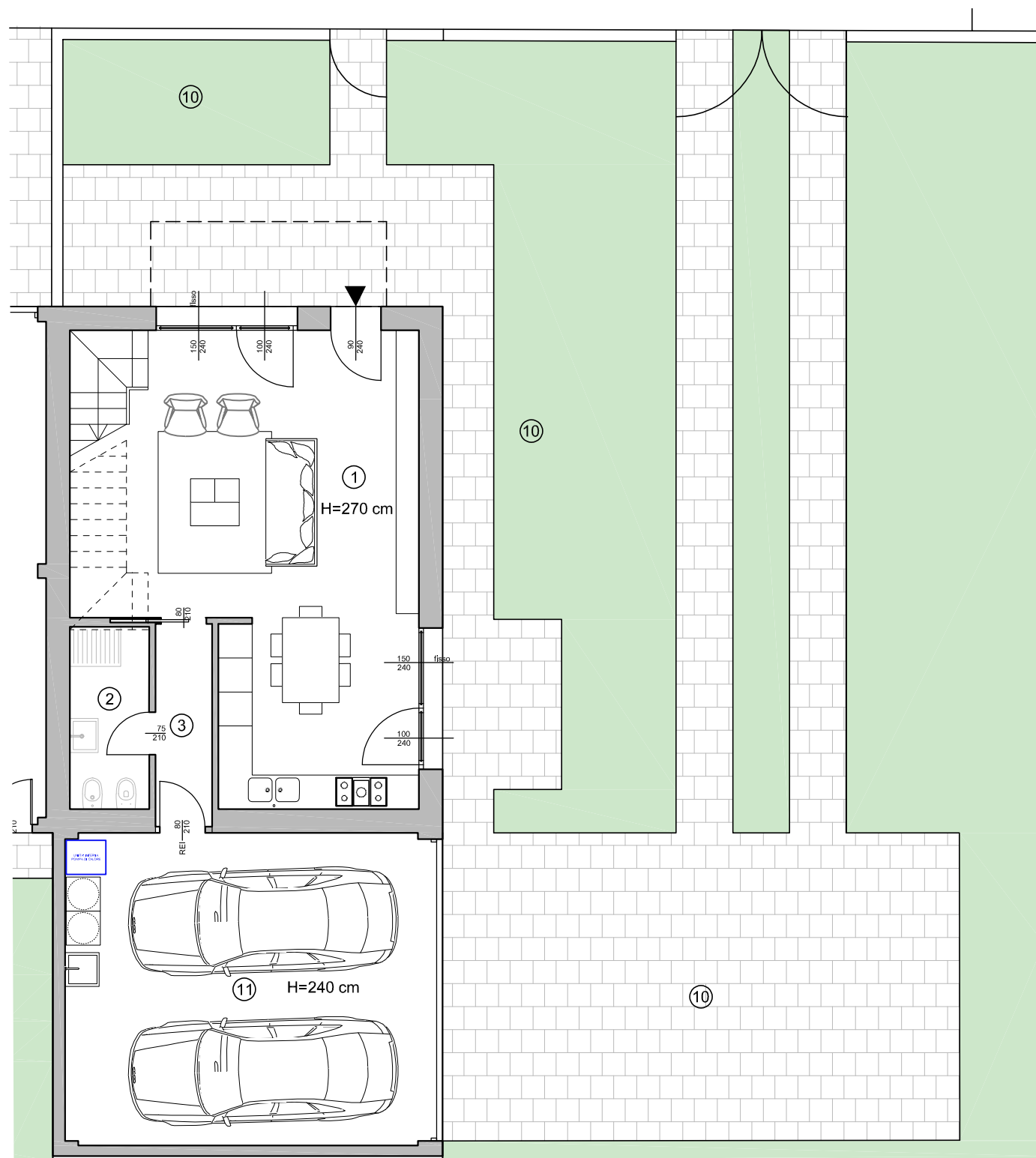
impresa costruttrice



PIANO PRIMO

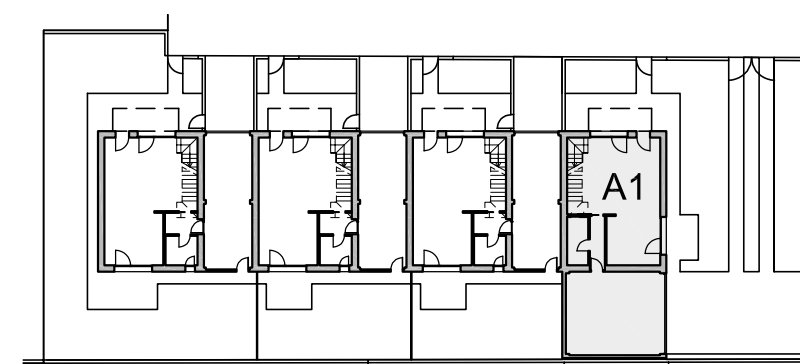
A1 - TOT. 93.70 mq
(esclusi giardino, terrazzo e garage)
Superfici utili calpestabili:

1 - Cucina - Soggiorno	41.00 mq
2 - Bagno	4.50 mq
3 - Disimpegno	3.55 mq
4 - Camera padronale	14.00 mq
5 - Camera	13.20 mq
6 - Camera	9.05 mq
7 - Bagno	5.55 mq
8 - Disimpegno	2.85 mq
9 - Terrazzo	5.15 mq
10 - Giardino	325.00 mq
11 - Garage - Lavanderia	36.05 mq



PIANO TERRA

edificio a confine
con parete cieca



Planimetria generale - scala 1:500